

AssetView™

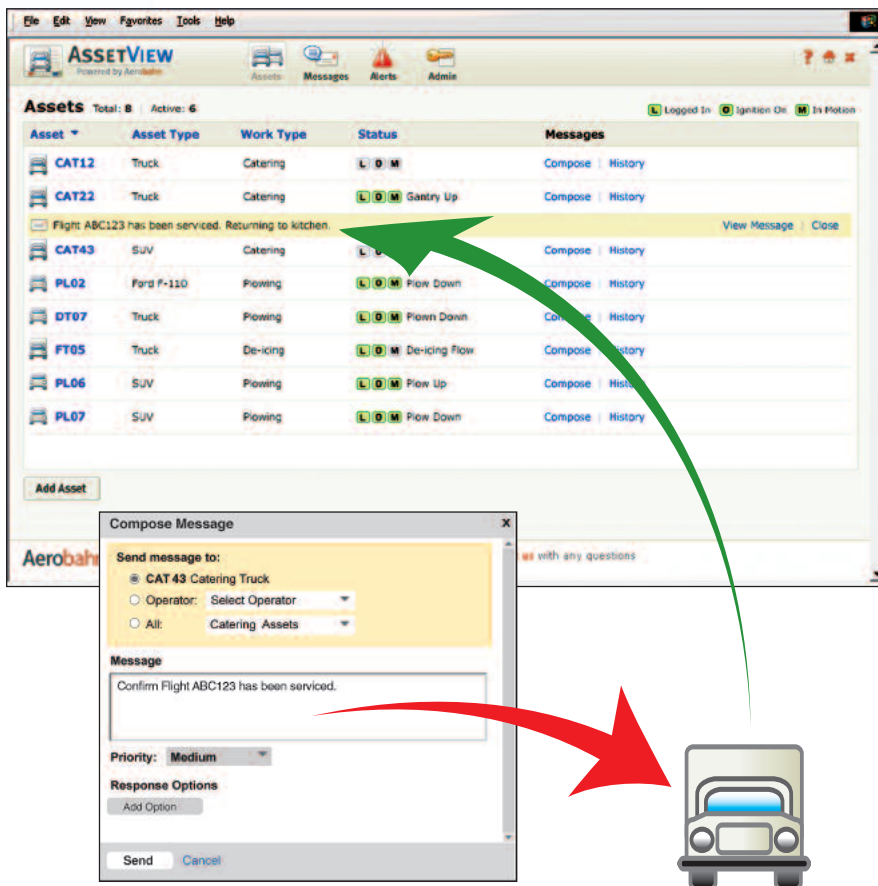


Sensis AssetView is part of Sensis Corporation's suite of Airport Automation tools which provide airlines and airports with comprehensive operational information to more efficiently manage and measure airside operations. Sensis AssetView works in cooperation with Sensis TaxiView™, a real-time airfield situational display, and Sensis OpsView™, a post-operational analysis tool, for accurate management and measurement of the efficiency of assets on the airport surface.

With Sensis AssetView, users can view asset type and the type of work being performed as well as the status of assets in real time (e.g., plow down, gantry up). A two-way messaging capability enables coordinators to promptly task vehicle drivers in real time, identify the priority of those messages (normal and high) and request an acknowledgement that the message was read. An alerting function provides alerts of key operational events such as

the attempted login of an unauthorized driver in a vehicle or a fluid level that does not correspond to established criteria. These alert notifications can be received via email or pager. Additionally, these alerts can be displayed in Sensis TaxiView, where users can also monitor the position and status of assets on the airport surface.

Sensis AssetView data can be analyzed in Sensis OpsView, enabling users to quantifiably understand the efficiency of the asset and the tasks performed by the asset. In Sensis OpsView, users can analyze the various states of vehicles over time, regions where the vehicles have been positioned and the length of time in the region, and detailed fluid and fuel dispensing information such as start and stop times, average rate, and amount dispensed.



Benefits

Increased labor productivity

Optimized handling of winter events with the capability to right-size assets

Improved emergency response

Quick recovery from Irregular Operations (IROPS)

Reduced aircraft turn time

Improved maintenance tracking

With Sensis AssetView, users can view the status and location of equipped vehicles, increasing productivity and enabling a reduction in aircraft turn time for more efficient airside operations.

Sensis AssetView is powered by the Aerobahn platform, a secure, web-based architecture that provides the event processing and database management components that are the backbone of the Sensis Airport Automation tools. Aerobahn integrates data from surveillance systems such as the Sensis Multifaceted Dependent Surveillance (MDS) multilateration system, as well as flight plan, ACARS, gate, remote asset and related flight data, presenting airlines and airports with comprehensive operational information. In addition to Sensis AssetView, Aerobahn enables the ability to manage operations in real-time with Sensis TaxiView™; the ability to quickly assess the key performance measures and ground operations with Sensis QuickView™; and the ability to quantifiably review and analyze past operational events, and the circumstances surrounding the events, with Sensis OpsView™. Sensis Airport Automation products are offered as a 24x7 service which Sensis manages

and maintains from its secure Data Service Facility (DSF). The DSF features automated continuous monitoring of the operation and health of Sensis Airport Automation tools, disaster recovery, data retention and rapid deployment of product enhancements.

Features and Functionality

Situational display:

- View position of all tracked vehicles
- Unique icons for vehicle types

Reporting and Analysis:

- Asset Activity: different states of vehicles over time
- Asset Movement Summary: regions in which vehicles have traveled
- Fluid/Fuel Dispensing (deicing and fuel trucks): start and stop times, average rate, amount of fuel dispensed

Alerting Functions:

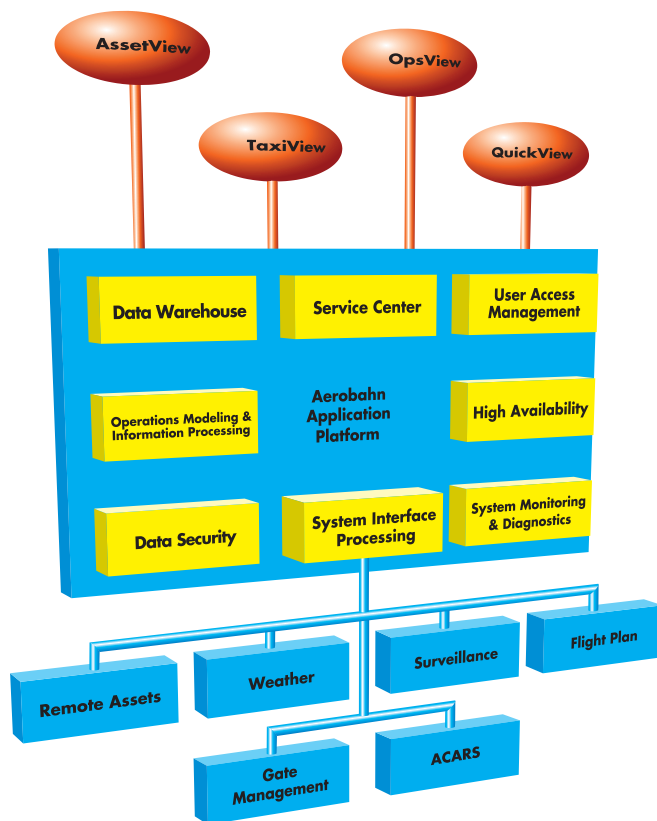
- Unknown driver alert
- Ignition on, no vehicle movement for N minutes
- Vehicle in region for N minutes
- Ignition on, no fuel flow for N minutes
- Ignition on, no deicing fluid dispensed for N minutes since last deice
- Fuel in dispenser less than needed threshold

Messaging Functions:

- Two-way text messaging between coordinator and vehicle driver

Vehicle Equipage:

- Secure, low-power, GPS, GPRS, Mode S or ADS-B ignition powered sensors
- Installation included
- Vehicle screens can be vehicle mounted or hand-held



While every effort is made to ensure data accuracy, please note that data may be subject to change.

Sensis Global Headquarters 85 Collamer Crossings East Syracuse, NY 13057 USA
 Phone: +1 315 445 0550 Fax: +1 315 446 2209 www.sensis.com email: info@sensis.com